

# TUUC TOUR

Welcome to Towson Unitarian Universalist Church! We are a Welcoming Congregation!  
We have plenty of space for you to host your next life event!



There is enough parking for 113 vehicles with six well-marked handicapped parking spaces.



Prime location just north of I-695, Towson Unitarian Universalist Church sits on nine acres, approximately two of which are for the building and parking lots. The remaining seven acres create a beautiful nature conservancy. Petti John Nature Trail is home to numerous species of trees, shrubs, vines, wildflowers and herbaceous plants, as well as countless birds and other wildlife.

**THE GROVE** is the perfect picnic setting nestled between the TUUC and a bubbling brook!



**THE MEMORIAL GARDEN** is a sacred space south of the building for quiet times.



## LOBBY LOUNGE AREA

The lobby measures 40' x 37' for 1480 square feet. This space can be easily converted to a meeting space or reception area with a kitchen directly off to the right.



Hospitality area is adjacent to the lounge area and kitchen. The galley kitchen includes electric stove, refrigerator, microwave and dishwasher with plenty of counter space for food prep.



Many professional caterers have turned these areas into fabulous banquet displays for weddings, bar/bat mitzvahs, concerts and other special events. All we ask is that the areas are returned to the original layout; thank you but please do not leave leftover foods and **NO RED WINE** served.



## MEETING ROOM

This main meeting room is 55' x 47' equaling 2585 square feet of natural light-filled space with comfortable moveable chairs that you can configure to the specifications of your event. This space adapts nicely to host a bar/bat mitzvah, wedding, conference meeting, music concert or recital. It is a great venue for any special occasion!



A great conference venue with six breakout rooms on the lower level; everything that you need without the corporate price tag!

Fire Code Capacity: 320-theater seating. There are 200 chairs readily available in the meeting room with an additional 50 folding chairs available from lower level.

The meeting room is also the home of Gallery Unicorn. Regularly scheduled art exhibits are on display with works by local and visiting artists from the surrounding area. Works are usually on sale with a portion of the proceeds benefiting TUUC.

## LOWER LEVEL

The Lower Lobby area is open and airy. You can arrange this area for diverse uses and is adjacent to another small kitchenette area with refrigerator, microwave, sink area and cabinets; Family use bathroom in the same proximity.



## ROOMS 1, 2 & 3

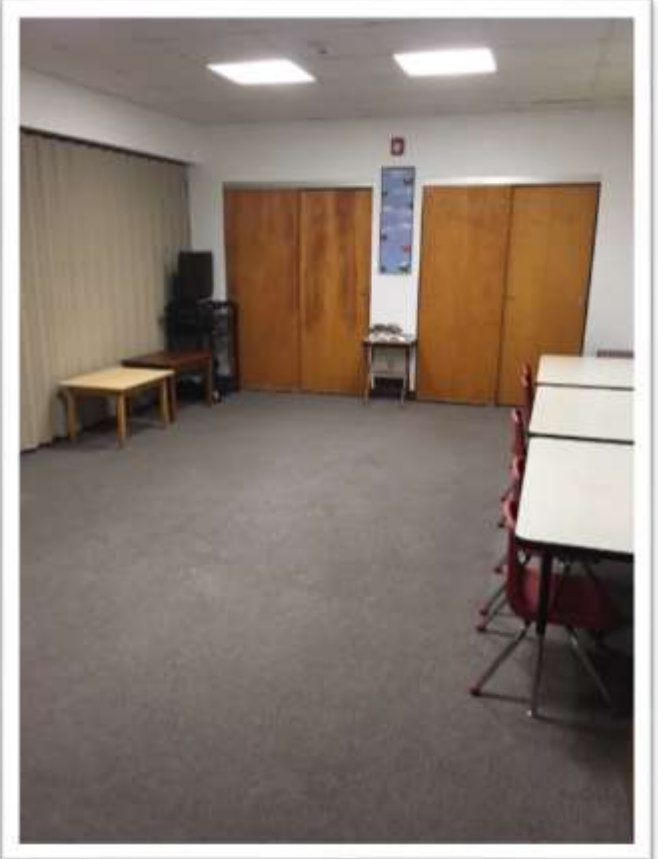
These partitioned areas are used for different size groups.



Room 1 measures 14' x 25' (350 square feet)



Room 2 measures 14' x 23' (322 square feet)



Room 3 measures 14' x 23' (322 square feet)

Use these rooms separately or as one huge 14' x 71' space (994 square feet)



Room 4 is 15' x 24' (360 square feet)



The Nursery in Room 5 is 15' x 24' (360 square feet) and is normally not for rent unless approved for special occasions

Room 6 is 20' x 19'6" (392 square feet)



Room 7 is 14'6" x 19'6" (286 square feet)





The playground is well equipped with child safe pre-kindergarten – 6th grade equipment.



Tours of the rental spaces are available Monday through Friday, 10:00 AM – 3:00 PM.

Please contact the office at 410-825-6045 for an appointment.